

2018 Sheep & Goat Expo

First Community Federal Credit Union Spur Arena
4722 Grape Creek Rd., San Angelo, TX
August 17-18, 2018

Presented by: Bill Thompson,
Extension Economist,
San Angelo, TX

TEXAS A&M
AGRI LIFE
EXTENSION

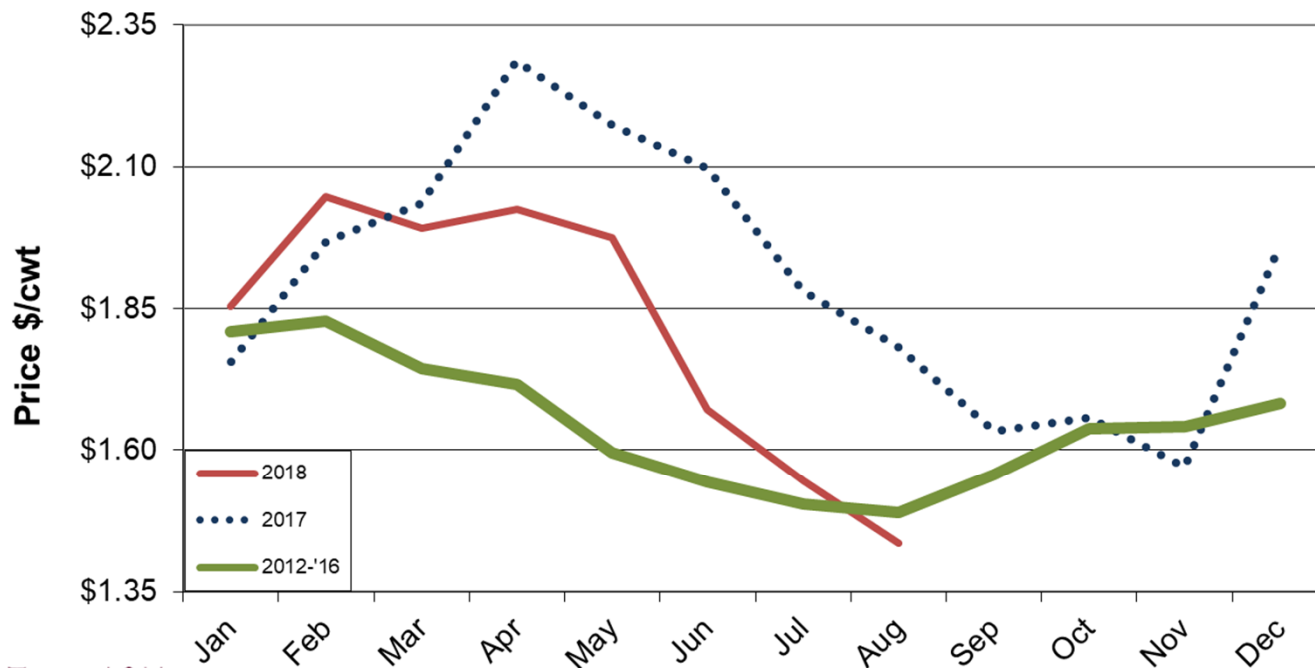
Today's Agenda

- ✓ Now is a good time to be in the Sheep/Goat business
- ✓ Current Market Conditions
 - ✓ Lambs
 - ✓ Goats
 - ✓ Wool
- ✓ Brief Historical Perspective
- ✓ Lurking Issues

Now is a Good Time to be in the Sheep/Goat business

- Positive Developments in various markets
 - Foodies and 'Millennials'
 - Local
 - Sustainable
 - Natural
 - Protein
 - Fiber

Monthly Weighted Average Feeder Lamb Prices at San Angelo, TX Auction.



Monthly Weighted Average Slaughter Lambs Price at San Angelo, TX Auction.

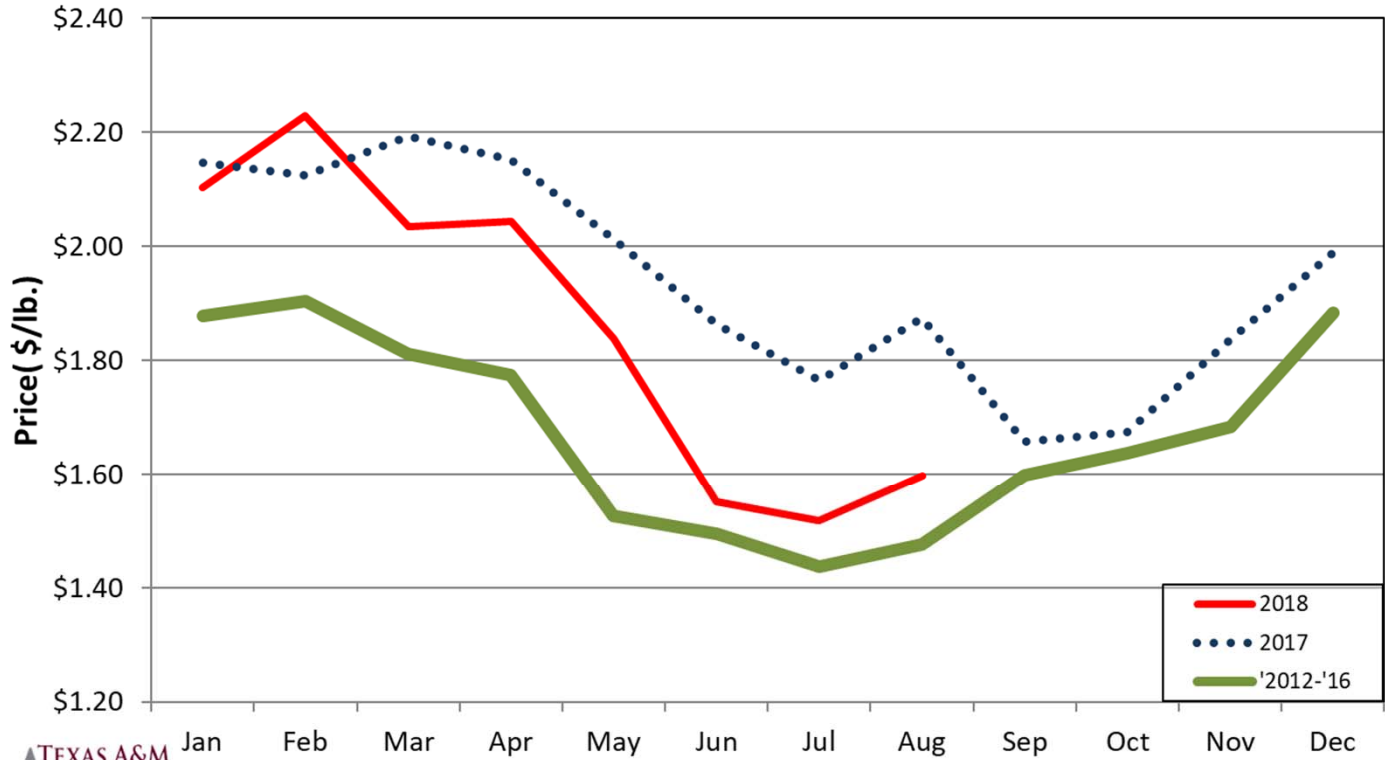
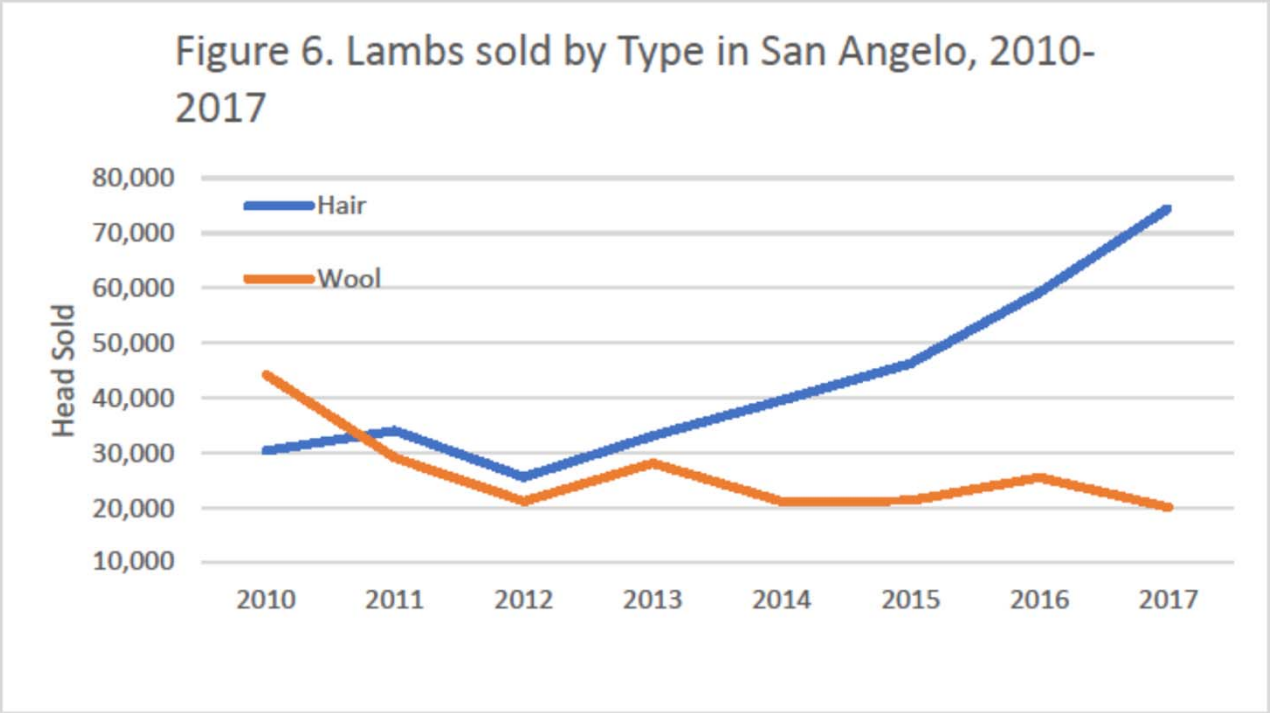
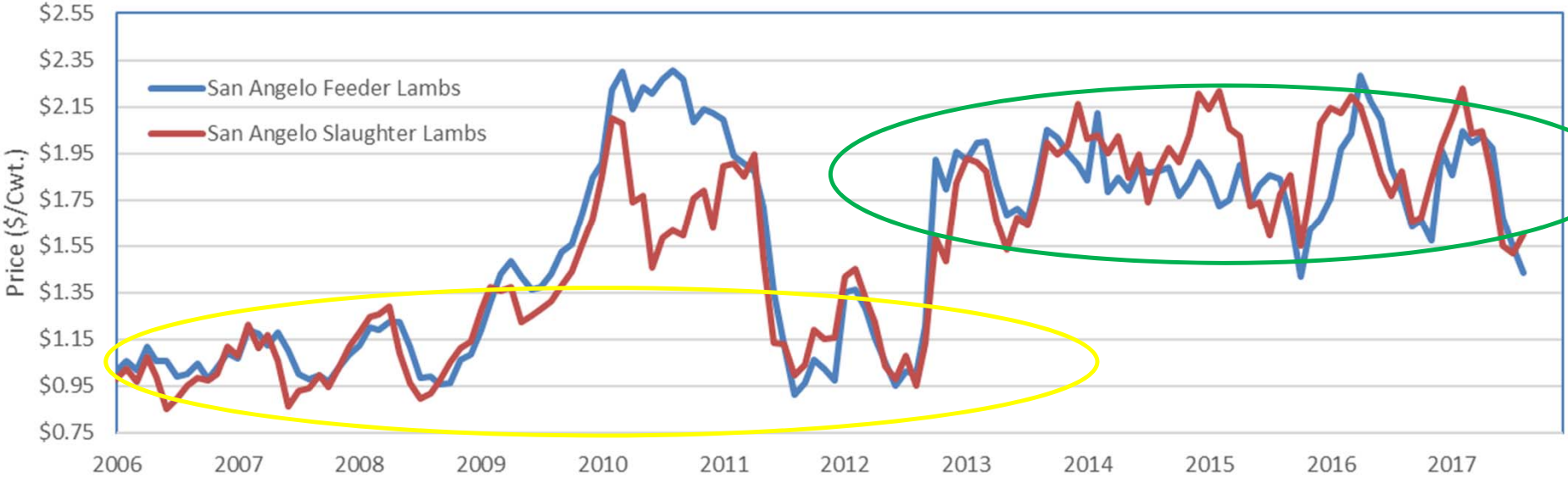


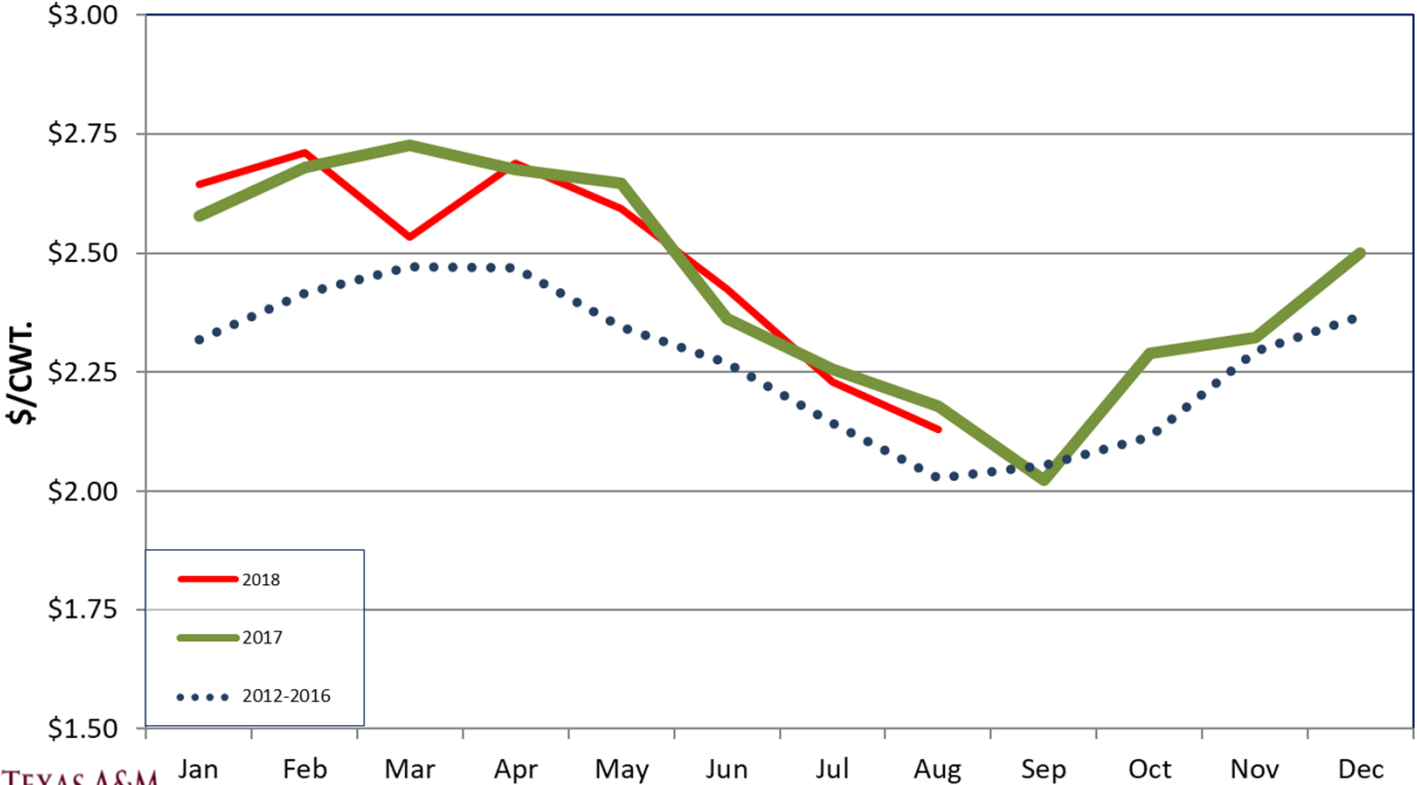
Figure 6. Lambs sold by Type in San Angelo, 2010-2017



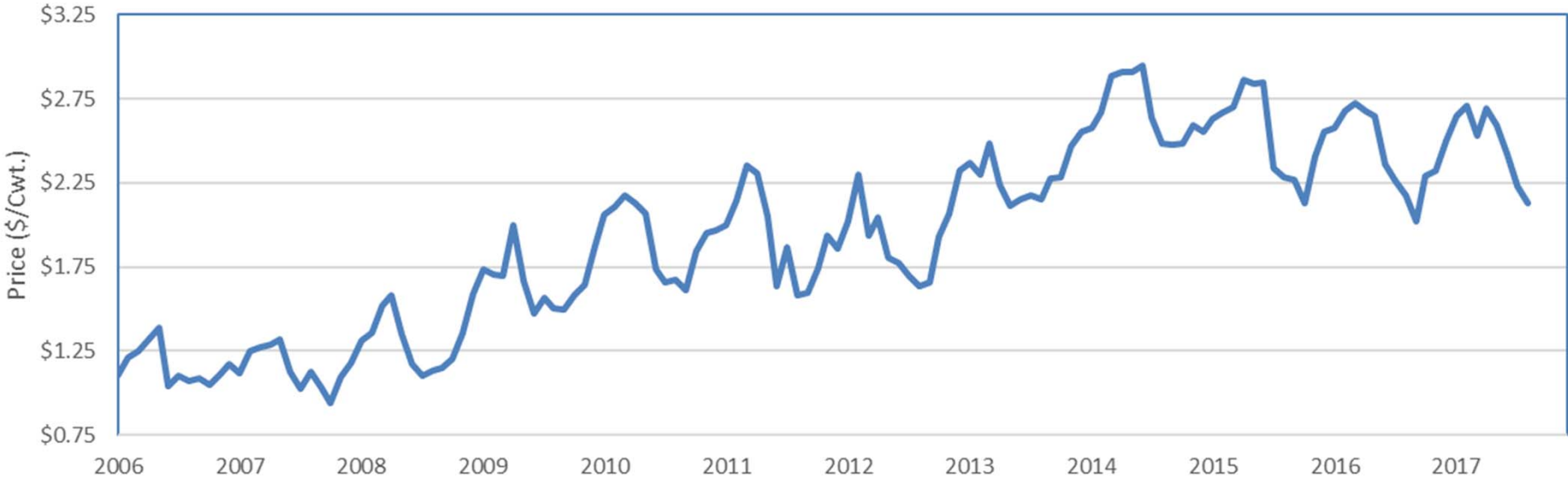
Weighted Average San Angelo Lamb Prices, Jan 2007-Aug 2018



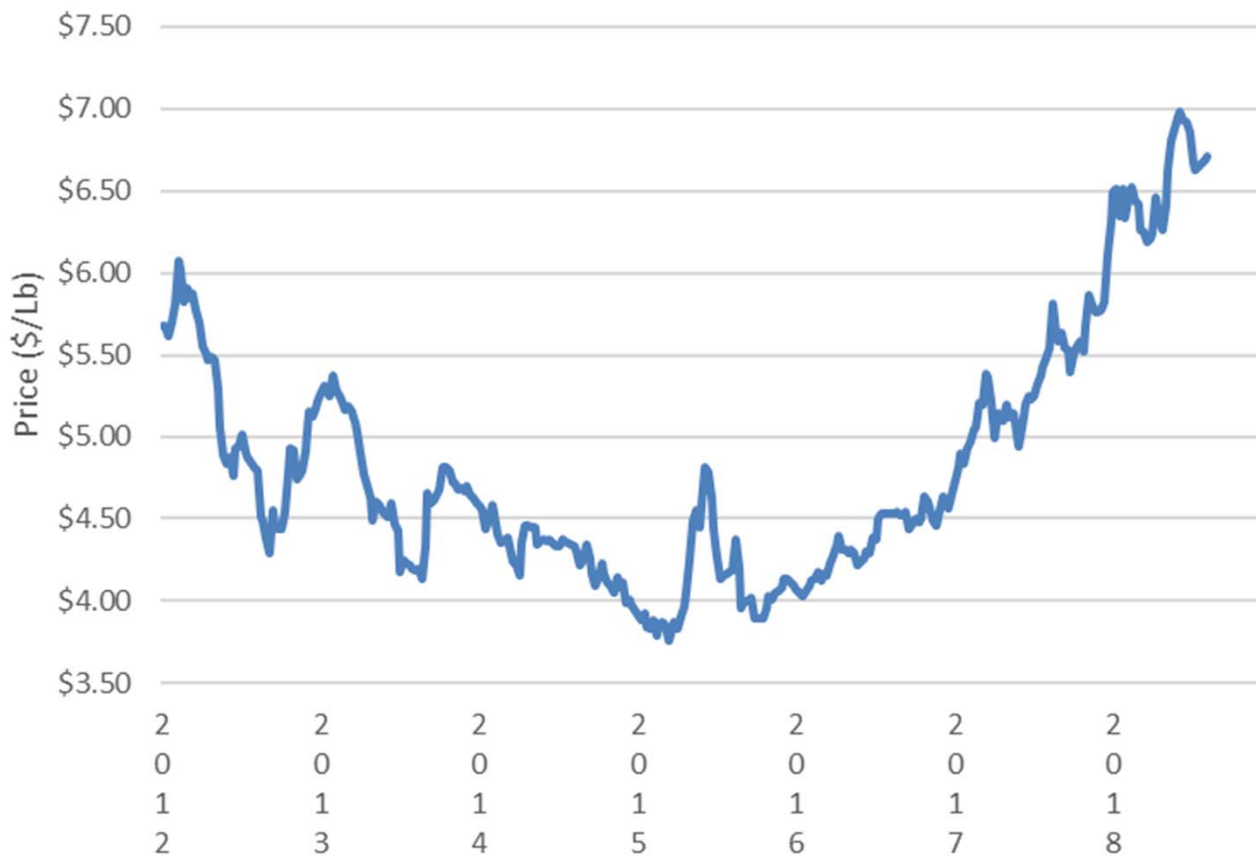
Monthly Weighted Average Price for All Kids at San Angelo, TX Auction.



Weighted Average San Angelo Kid Prices, Jan 2007-Aug 2018



Eastern Market Indicator - US Wool Prices: 2012-2018



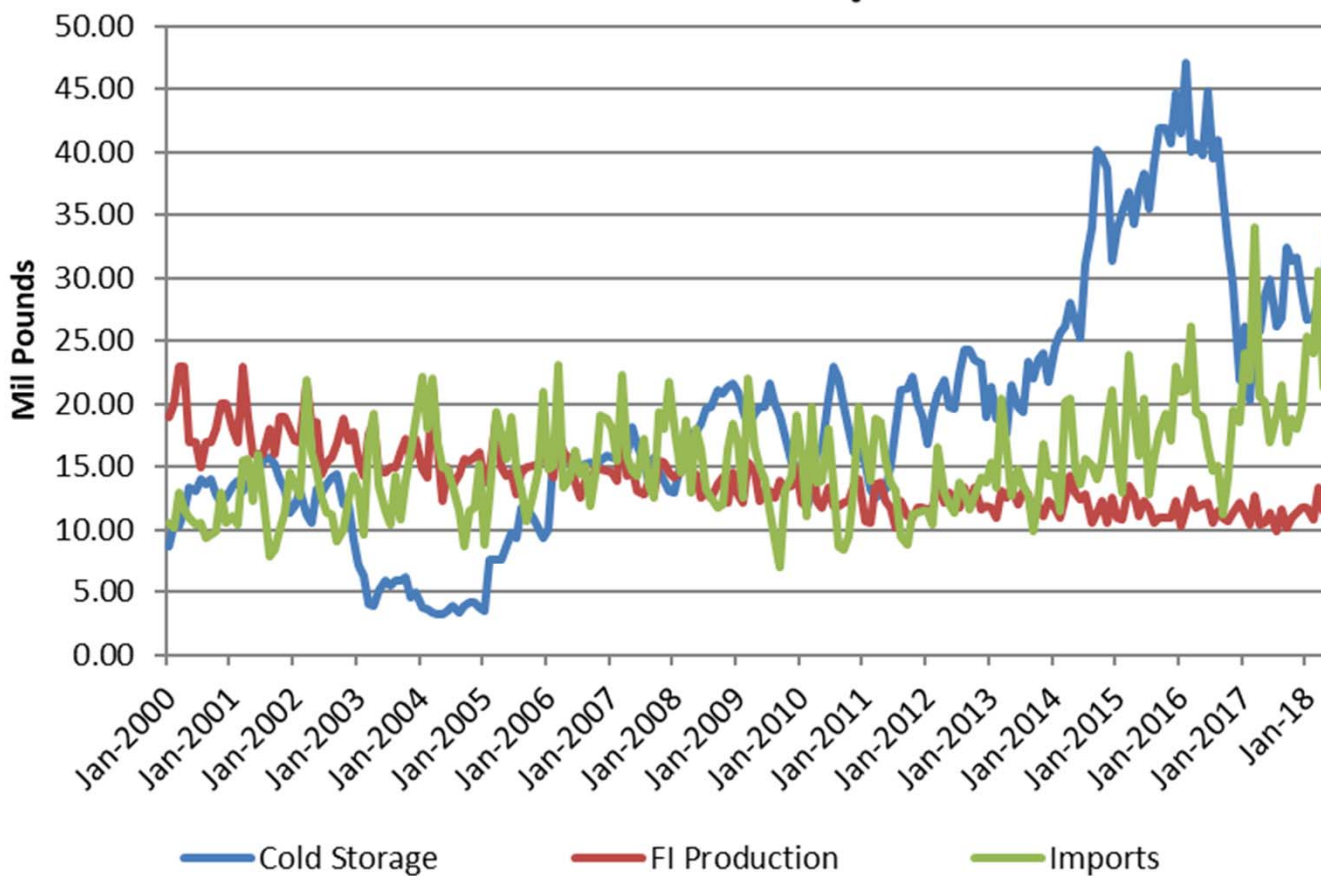


Looming (Lingering) Issues

Issues Affecting Sheep and Goat Industry

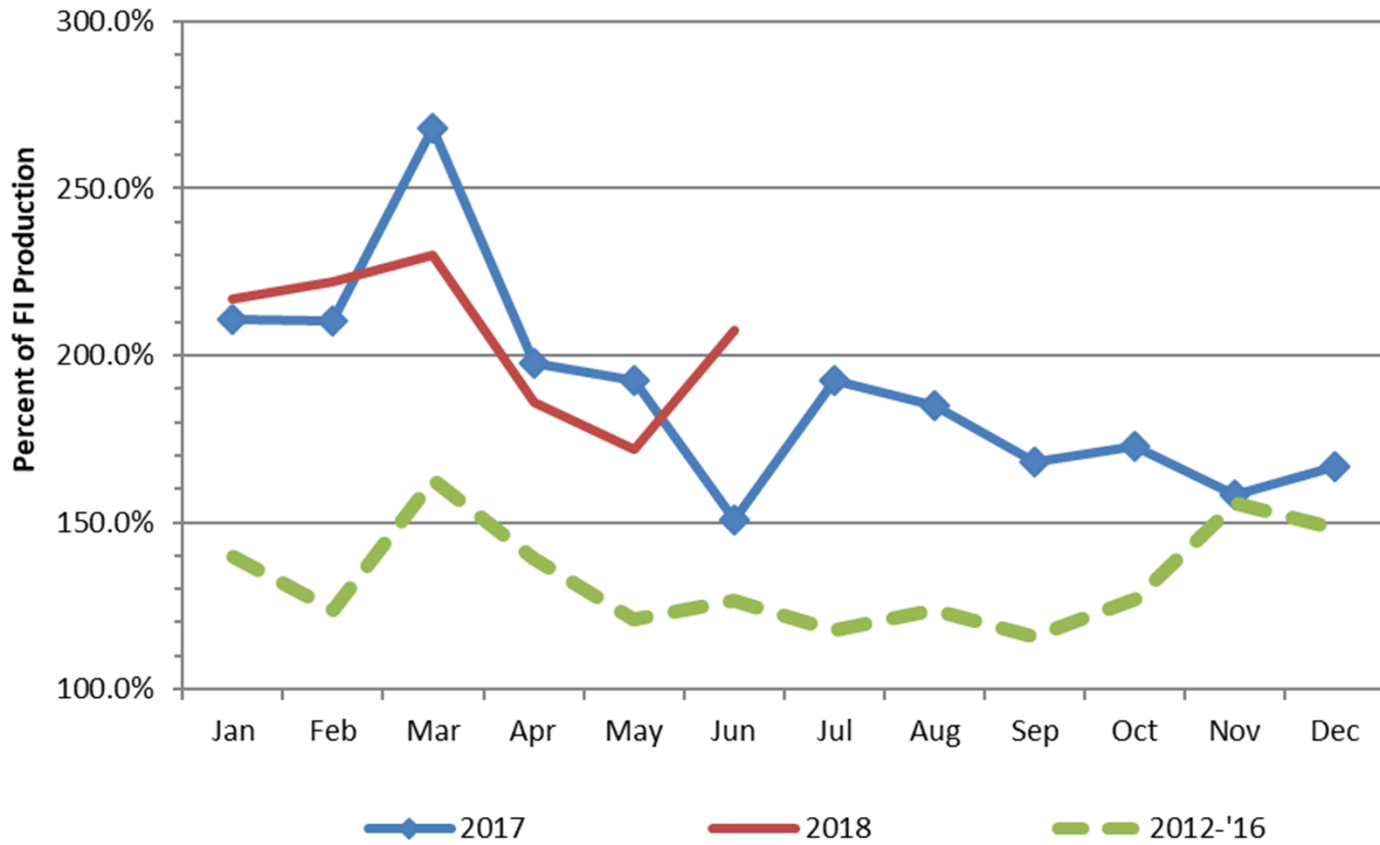
- Large Imports
 - We've had strong prices in spite of this
- Seasonality of production/prices
 - We do have a genuine seasonality problem
- Mandatory/Voluntary Price Reporting
- Other issues certainly exist, I've just focused on these examples.

Mutton and Lamb in Cold Storage vs FI Production Vs Imports



US Lamb and Mutton Imports as a Percent of Production

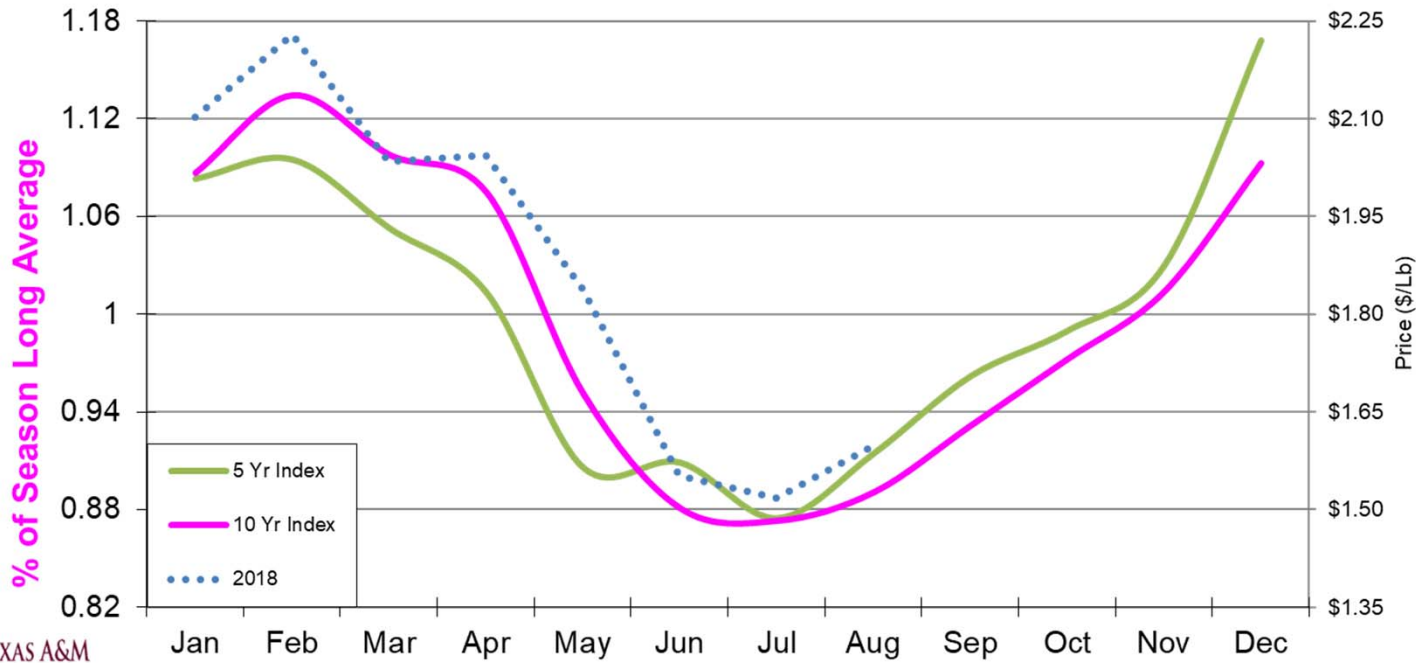
Carcass Weight, Monthly



San Angelo Hair Lamb Prices and Average Monthly Volume; 2010-2017.



Seasonal Price Index and Weighted Average Monthly, Slaughter Lamb Price at San Angelo, TX Auction.



Updated: 8/8/2018

Contact Me

William (Bill) Thompson
Assistant Professor and Extension Economist
Texas A&M AgriLife Extension Service
7887 US HWY 87 North
San Angelo, TX 76901
Phone: 325-657-7306
Email: w-thompson@tamu.edu

<http://sanangelo.tamu.edu/extension/west-central-agricultural-economics/>



@westtxagecon

TEXAS A&M
AGRILIFE
EXTENSION